

Model 8900GC Application Note

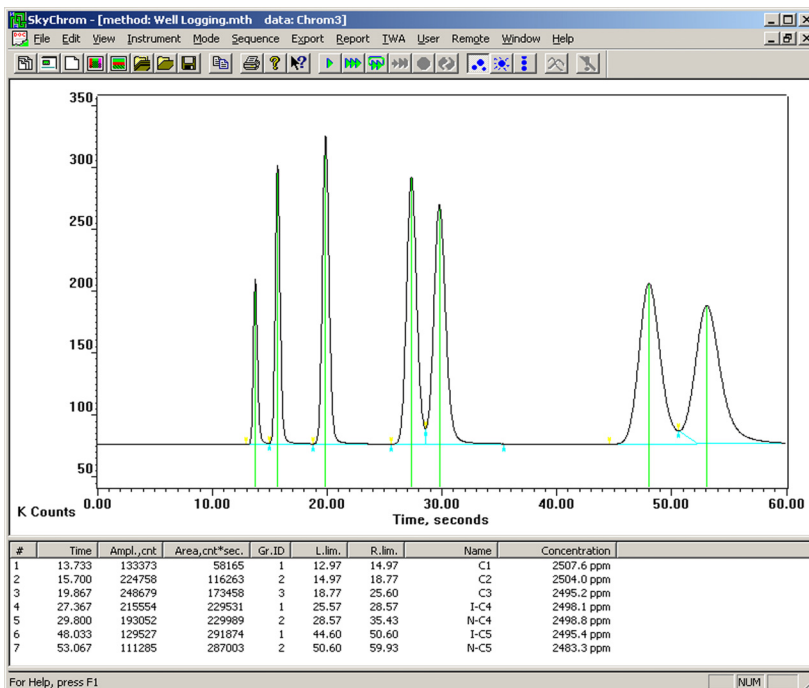
C1-C7 Hydrocarbons

Baseline - **MOCON**, Inc.™

APPLICATION

The Model 8900 Well Logging Gas Analyzer combines the selectivity of gas chromatography with the sensitivity, broad dynamic range and hydrocarbon selectivity of a flame ionization detector (FID) providing fast analysis of C1-C7 hydrocarbons required in Mud Logging for Oil & Gas exploration.

The 8900 WL Analyzer uses a dual column configuration with timed backflush to vent which is used to strip of moisture and C6+ hydrocarbons. A pre-cut column is used in series with the analytical column. At sample injection a fixed sample volume is carried to the pre-cut column. Backflush of the pre-cut column is timed from sample injection so that only C1-C7 hydrocarbons are eluted from the pre-cut column to the analytical column. C6+ hydrocarbons on the pre-cut column are then vented. C1-C7 hydrocarbons are separated on the analytical column and elute to the flame ionization detector (FID) for analysis.



Chromatogram

Analysis

Analysis Time: ≤60 seconds

Detector: FID

Column: Proprietary Micropacked Column

Oven Temperature: 80°C

Carrier: Hydrogen, 32cc/min typical

Fuel: Hydrogen, 8cc/min typical

Combustion Air: 200cc/min typical

Features

- Analysis of C1-C5 Hydrocarbons including Propylene for Gas Referencing
- Fast Analysis <60 seconds
- Automatic Restart for Unattended Operation
- Automatic Zeroing for Long-Term Stability
- Automatic Ignite of FID
- Automatic Hydrogen & Combustion Air Shutoff for Maximum Safety
- Automatic or Manual Calibration to a Known Standard
- Electronic Support Gas Regulation
- Analog Output Ranges are User Selectable
- Concentration and Diagnostic Alarm Relays
- Optional Local Area Network (LAN) Interface

Baseline, the reference point from which all things are measured.

Model 8000GC Application Note

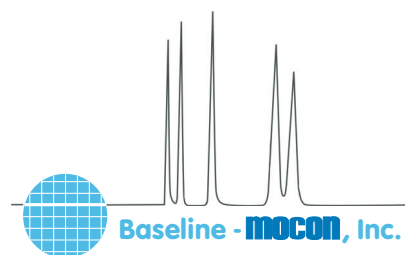
C1-C7 Hydrocarbons

Baseline - MOCON, Inc.™

Specifications

LOWER DETECTION LIMIT	10 ppm as Methane
LINEAR RANGE	100 ppm to 50% as Methane
ACCURACY	±5% (relative) within dynamic measurement ranges of 100 ppm to 20% as methane, 100 ppm to 2% for ethane and propane and 100 ppm to .25% for the butanes and pentanes.
PRECISION	2% of Measured Value
ANALYSIS TIME	≤60 Seconds
CARRIER	Hydrogen, 32cc/min typical
FUEL	Hydrogen, 8cc/min typical
COMBUSTION AIR	Air, 200cc/min typical
OVEN TEMPERATURE	80°C
OUTPUT	
ANALOG	Standard: (1) 0-20ma or 4-20ma loop power supplied, isolated. Selectable for: gas concentration, unintegrated detector signal or diagnostics. Up to 16 additional programmable 0-20ma, 4-20ma or voltage outputs: 0-1V, 0-5V, or 0-10V.
DIGITAL	Standard: RS-232 output Optional: Local Area Network (LAN)
RELAYS	Standard: (5) User programmable relays for concentration and diagnostic alarms. Up to 32 additional relays available.

Represented by:



P.O. Box 649, Lyons, CO 80540
In the continental United States, phone 800.321.4665, or fax 800.848.6464, toll free.
Worldwide, phone 303.823.6661 or fax 303.823.5151
• URL: www.baselineindustries.com • E-mail: sales@baselineindustries.com