

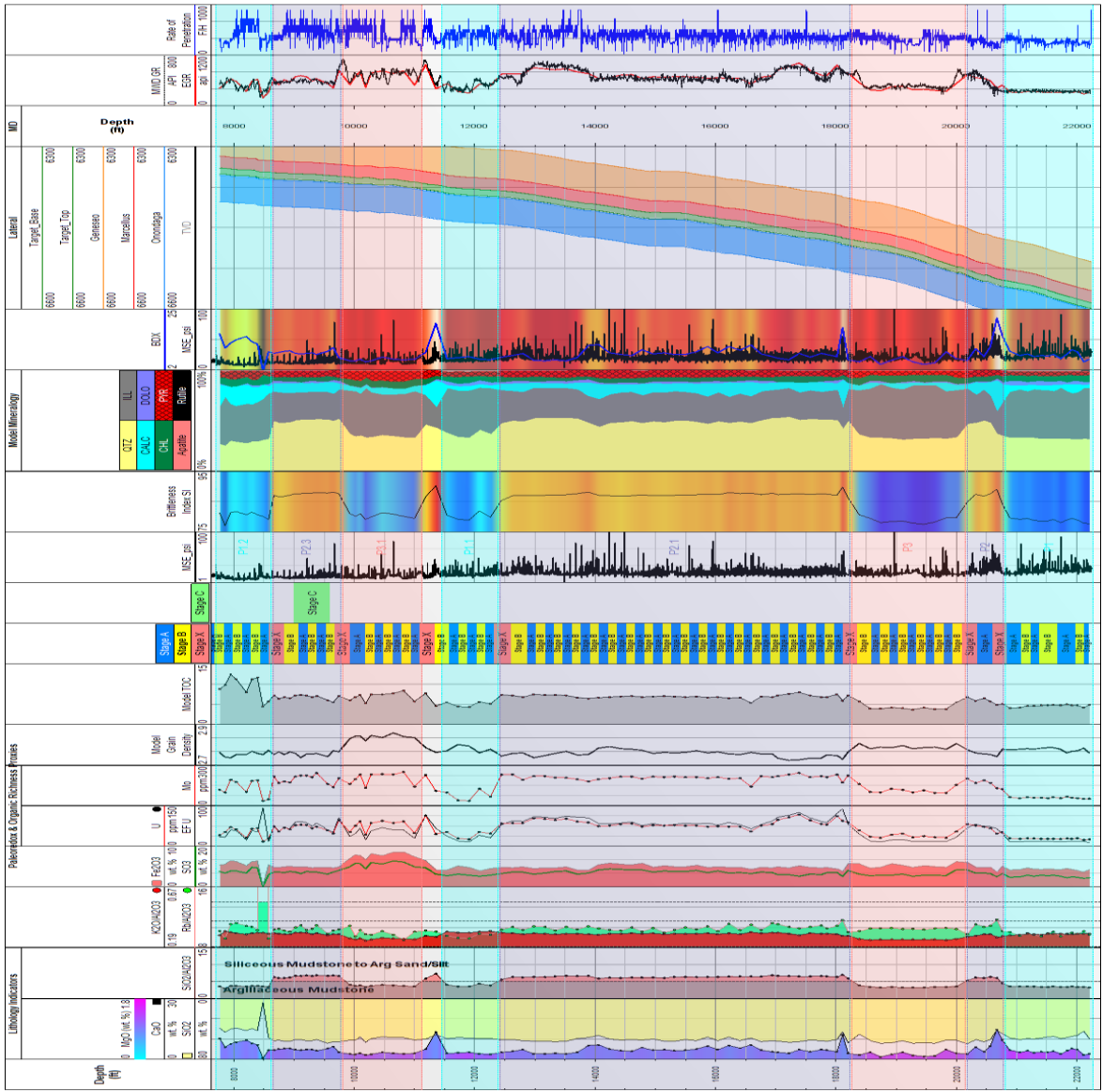


# Cuttings to Completions

## Hybrid Mud Logging Case History

### Issue Summary

With cost constraints limiting our Client's options for traditional methods of geological evaluation, DWL proposed the use of its Hybrid Mud Logging (HML) and elemental steering service. Collecting and using XRF to analyze cuttings in realtime, the data kept the well in target, and allowed DWL to build a picture of facies development, organic content, and ...  
*(continued over)*



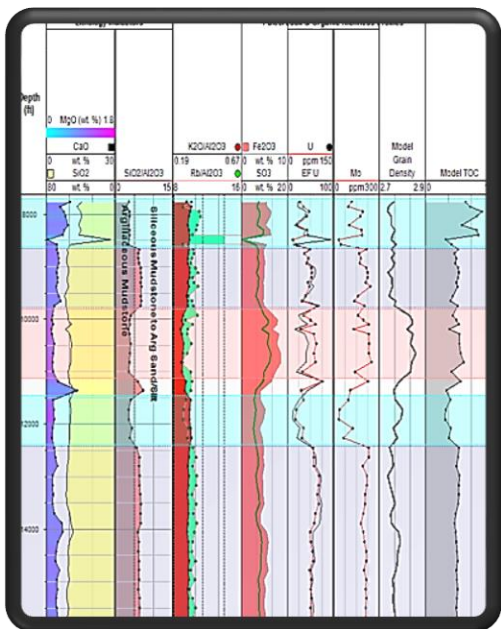


# Cuttings to Completions

## Hybrid Mud Logging Case History

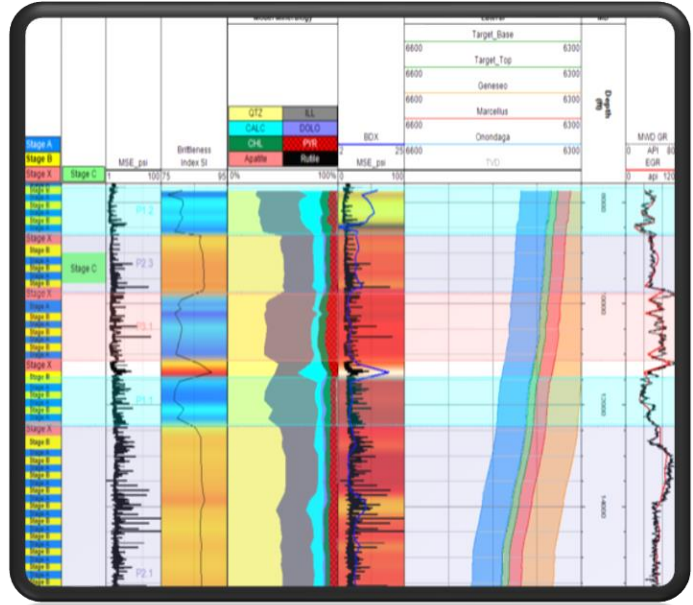
(continued from front) ... brittleness for use by the Client's completions group. With advanced software and A.I. being used in realtime, DWL not only improved completions efficiency, but also drilling efficiency and geopositioning. Furthermore, with the data available to us through surface measurements while drilling, we could also offer production forecasting.

The HML service has proven that cost-efficient solutions to improve geological certainty and ultimately the bottom-line are available for every well drilled. With HML, the high cost of downhole tools or coring will not limit your knowledge. HML delivers value that far outweighs its cost.



Lithology and Paleoredox Indicators

Completion Stage Placement  
Brittleness Index  
Mineralogy  
Brittleness and MSE  
Elemental Geopositioning  
Sample Depth Quality GR vs EGR



Contact DWL for more information

[www.dwl-usa.com](http://www.dwl-usa.com) - [info@dwl-usa.com](mailto:info@dwl-usa.com)

711 West 10th Street, Reserve, Louisiana, 70084

Telephone: 1-800-280-2096